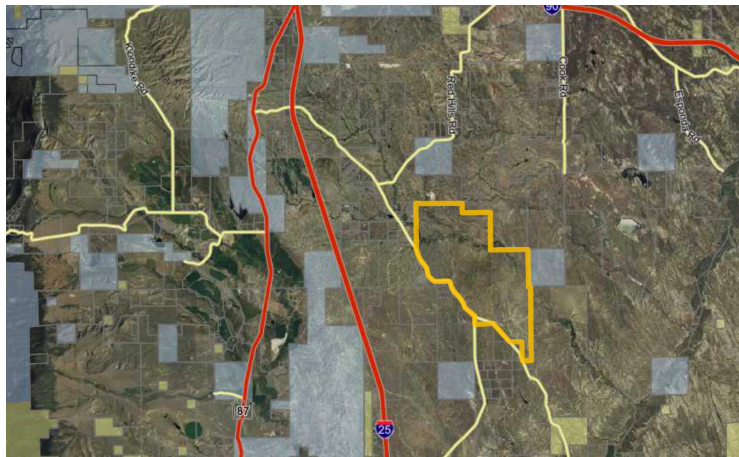


20 MINUTES FROM BUFFALO, WYOMING

WINCHESTER RANCH



FEATURES

- 4,475 acres
- Unencumbered
- 9 yearround propane stock tanks
- Artisan water sources
- Unobstructed Bighorn Mountain views including Cloud Peak, Bomber Mountain and Blacktooth
- Multiple private home sites
- Borders state land
- Accessed via well-maintained, paved county road
- Capacity of approx 250 AUM year round

JILLIAN SMITH 307.202.9400

CHOPPER GRASSELL 307.231.2603



RANCH & LAND

COMPASS